


Observing The Moon

After the Sun, the Moon is the most impressive astronomical object in our skies. Have you looked at the Moon with binoculars or a small telescope? It doesn't take expensive equipment to observe the moon. You can see craters, vast mountain ranges, and vast dark areas called 'Mare' (Latin for sea) because people in ancient times thought these areas were oceans on the Moon. Did you know that if it weren't for the Moon, that life on Earth may not even have been possible? It is the twice-daily tides, caused by our Moon, that allow life in tide pools to exist.

One side of the Moon always faces the Earth because it orbits the Earth in the same amount of time it takes to rotate once, its 27.3 day cycle. Observing the Moon over the course of one complete cycle will reveal many details of the lunar surface. Some craters mountains in their centers and several more recent craters have 'rays' radiating away from the impact site caused by the crushed rock sprayed out of the crater when the meteor impacted. You can easily spot the crater Tycho for a great example!



**ANTELOPE VALLEY
ASTRONOMY CLUB, INC.**

**A 501 (c)(3) Non-Profit
Organization**

On the web at:
www.avastronomyclub.org

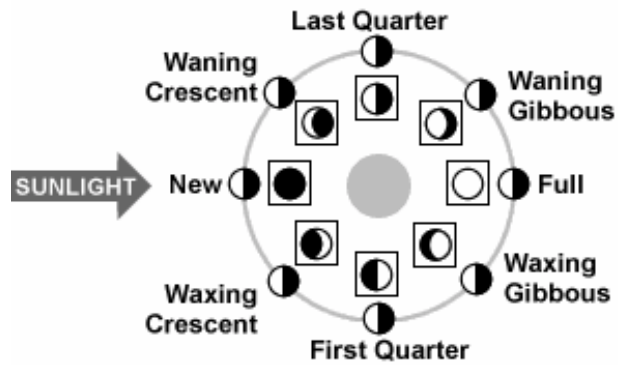
**Tel: (661) 724-1623
Or (661) 822-4580**

**ANTELOPE VALLEY
ASTRONOMY CLUB, INC.**

Moon Facts	
Diameter	2160 Miles
Time to Orbit Earth	27.3 Days
Time to Rotate Once	27.3 Days
Distance from Earth	238,850 Miles
Surface Gravity	0.17 of Earth's
Did You Know?	The Moon spirals away from Earth 1 1/2 inches per year

Moon Phases

Outer circle is Moon's orbit and shows sunlight hitting the Moon at each phase. Inside the squares is what you see from Earth.



Antelope Valley Astronomy Club, Inc.

P.O. Box 8545
Lancaster, CA 93539

Phone: 661-724-1623
or (661) 822-4580
Email: info@avastronomyclub.org



The Man in the Moon



The Woman in the Moon



The Rabbit in the Moon



We're on the web! <http://www.avastronomyclub.org>

You Are Invited to Join the Antelope Valley Astronomy Club!



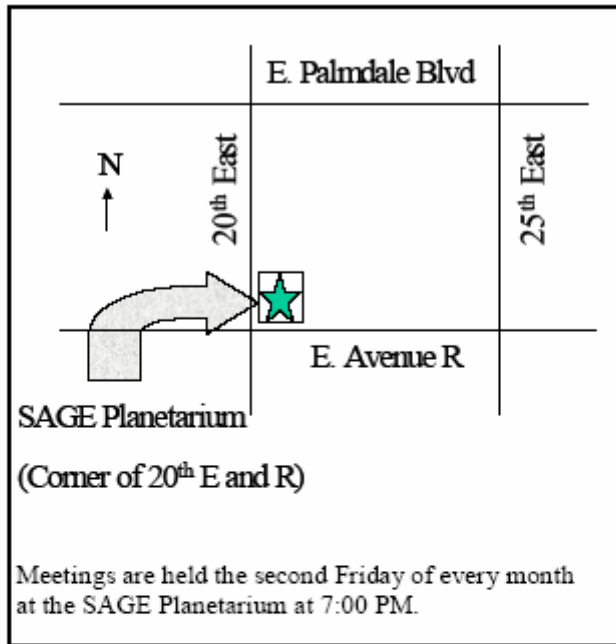
ANTELOPE VALLEY
ASTRONOMY CLUB, INC.

A 501 (c)(3) Non-Profit Organization

Monthly Meetings and Activities

The AVAC holds monthly meetings the second Friday of every month at the SAGE Planetarium, 38060 20th Street East, (located on the northeast corner of East Avenue R and 20th East) at 7:00 PM. The meetings include guest speakers and monthly programs about the fascinating night sky, while giving members and guests a chance to get together to talk about the stars or other topics of interest. We hold monthly public star parties and frequent 'deep sky' observing sessions as weather permits. We offer our members resources to help you learn more about astronomy including classes, telescopes and books.

Directions to the Meeting



AVAC Membership Application

AVAC Offers A Variety Of Membership Options:

- Family Membership Cost _____
(See Below)
- Individual Membership Cost _____
- Junior Membership (13 and younger) Total _____

Dues are prorated each month. See table below
Example: A Family Membership paid in June is \$17.50

Membership Dues

Month	Family	Individual	Junior
JAN	\$ 30.00	\$ 25.00	\$ 15.00
FEB	\$ 27.50	\$ 22.92	\$ 13.75
MAR	\$ 25.00	\$ 20.83	\$ 12.50
APR	\$ 22.50	\$ 18.75	\$ 11.25
MAY	\$ 20.00	\$ 16.67	\$ 10.00
JUN	\$ 17.50	\$ 14.58	\$ 8.75
JUL	\$ 15.00	\$ 12.50	\$ 7.50
AUG	\$ 12.50	\$ 10.42	\$ 6.25
SEP	\$ 10.00	\$ 8.33	\$ 5.00
OCT	\$ 7.50	\$ 6.25	\$ 3.75
NOV	\$ 5.00	\$ 4.17	\$ 2.50
DEC	\$ 2.50	\$ 2.08	\$ 1.25

Checks should be made out to 'AVAC'
You may mail them to the Club PO Box or bring checks or cash to the meeting. **Do not mail cash.**
You may also pay via PayPal on our website.

Name(s) _____

Address _____

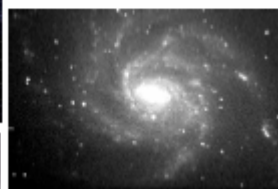
Phone _____

e-mail _____

ANTELOPE VALLEY
ASTRONOMY CLUB, INC.

P.O. BOX 8545
Lancaster, CA 93539

Phone: 661-724-1623 or 661-822-4580
Email: info@avastronomyclub.org



Galaxy M101, Viewed Through A 10" Telescope